

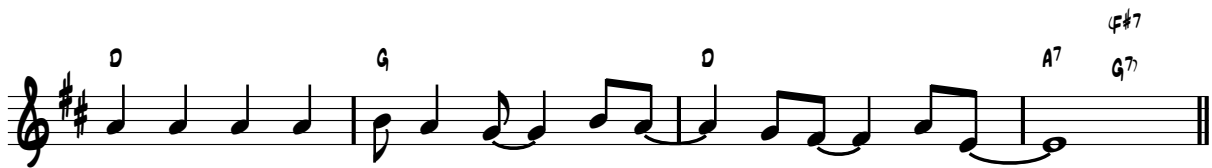


Els Beatles

Lletra: Dàmaris Gelabert
Música: Jonathan Gelabert



Qua-tre nois de Li-ver pool, que el món__ van trans - for mar__
No pa - ra - ven detriom far__ amb les__ se ves__ can çons.__
Me - lo - di - es tan ge- nials_ que et que - den en__ el cap.__



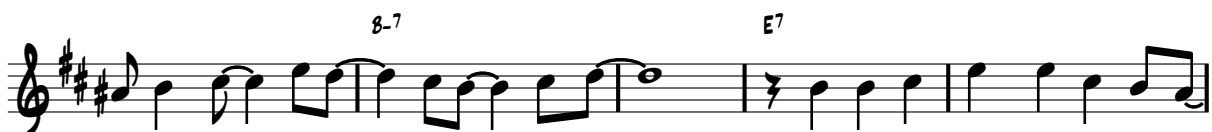
amb gui - ta - rres i unnou loock, a tots__ van fas - ci - nar.__
Els con-certs de gom a gom, ai - xe - ca - ven__ pas sions.__
Lle - tresque ar - ri - ben al cor__ i rit - mes per__ ba - llar.__



Le - non, Mc - Cart - ney,__ George i Rin - go. Quin quar tet!__
Fans que cri - da - ven__ quan so - na - va el pri-mer a cord.__
Yes - ter - day, Let it be,__ Help! i Ye - llow sub - ma - rine,__



El grup més bo del pop._ To-thomho sap_ del cert. El seu úl -
Vo - li - en ser com ells,__ els jo - ves d'a - quell temps.
Please, please me, Love me do, _____ All you need is love.



tim con- cert va ser__ en un__ ter - rat,__ ens pot semblar un gran dis - ba - rat.



Els Beatles

Lletra: Dàmaris Gelabert
Música: Jonathan Gelabert

Musical notation for the first line of the song. The key signature is two sharps (F# and C#). The melody starts with a whole note A4, followed by a whole rest. The second measure is a whole rest. The third measure begins with a quarter rest, followed by quarter notes G4, A4, B4, and C#5. The fourth measure starts with a quarter rest, followed by quarter notes B4, A4, G4, and F#4. Chord symbols A7, G7, F#7, and B-7 are placed above the staff. The lyrics are: Però la Bea - tle-ma - ni - a en-ca - ra ensfa sen tir:

Musical notation for the second line of the song. The melody continues with a quarter note G4, a quarter note F#4, and a quarter note E4. The second measure starts with a quarter rest, followed by quarter notes D4, C4, and B3. The third measure begins with a quarter rest, followed by quarter notes A3, G3, and F#3. The fourth measure starts with a quarter rest, followed by a half note E3. Chord symbols E7 and A7 are placed above the staff. The lyrics are: can-çons que mai po - dran mo - rir.